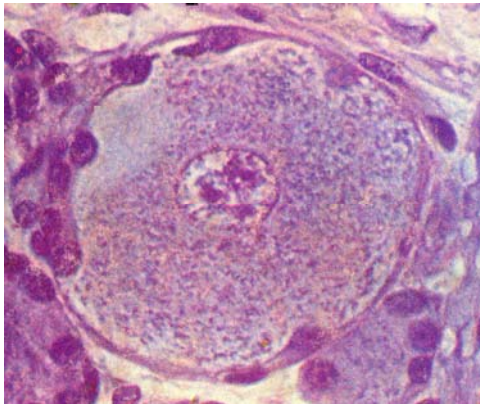
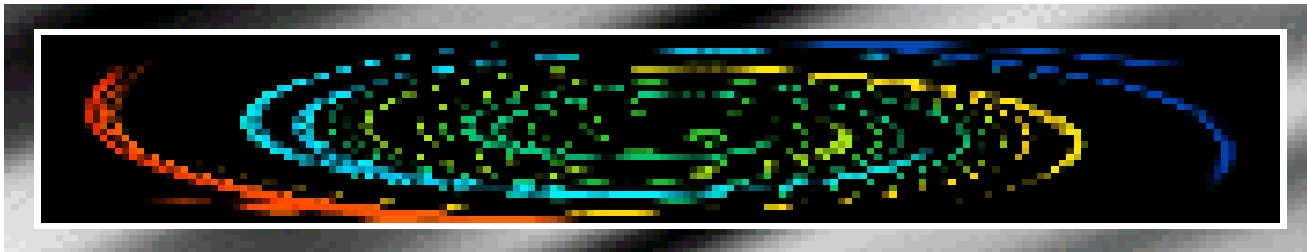


# Histology and Embryology



- Chapter 1 Introduction and Cell**
- [Chapter 2 Epithelial tissue](#)**
- Chapter 3 Connective Tissue**
- Chapter 4 Blood**
- Chapter 5 Cartilage and Bone**
- Chapter 6 Muscle Tissue**
- Chapter 7 Nerve Tissue**
- Chapter 8 Circulatory System**
- Chapter 9 Immune System**
- Chapter 10 Skin**
- Chapter 11 Digestive Tract**
- Chapter 12 Digestive Gland**
- Chapter 13 Respiratory System**
- Chapter 14 Urinary System**
- Chapter 15 Endocrine System**
- Chapter 16 Sense Organ**
- Chapter 17 Male Reproduction**
- Chapter 18 Female Reproduction**
- Chapter 19 Embryology 1**
- Chapter 20 Embryology 2**

# Chapter 2 Epithelial Tissue

## I Slides

## II Sections:

No. 39 simple squamous epithelium

No.59 simple columnar epithelium

No.79 pseudostratified ciliated columnar epithelium

No.55 stratified squamous epithelium

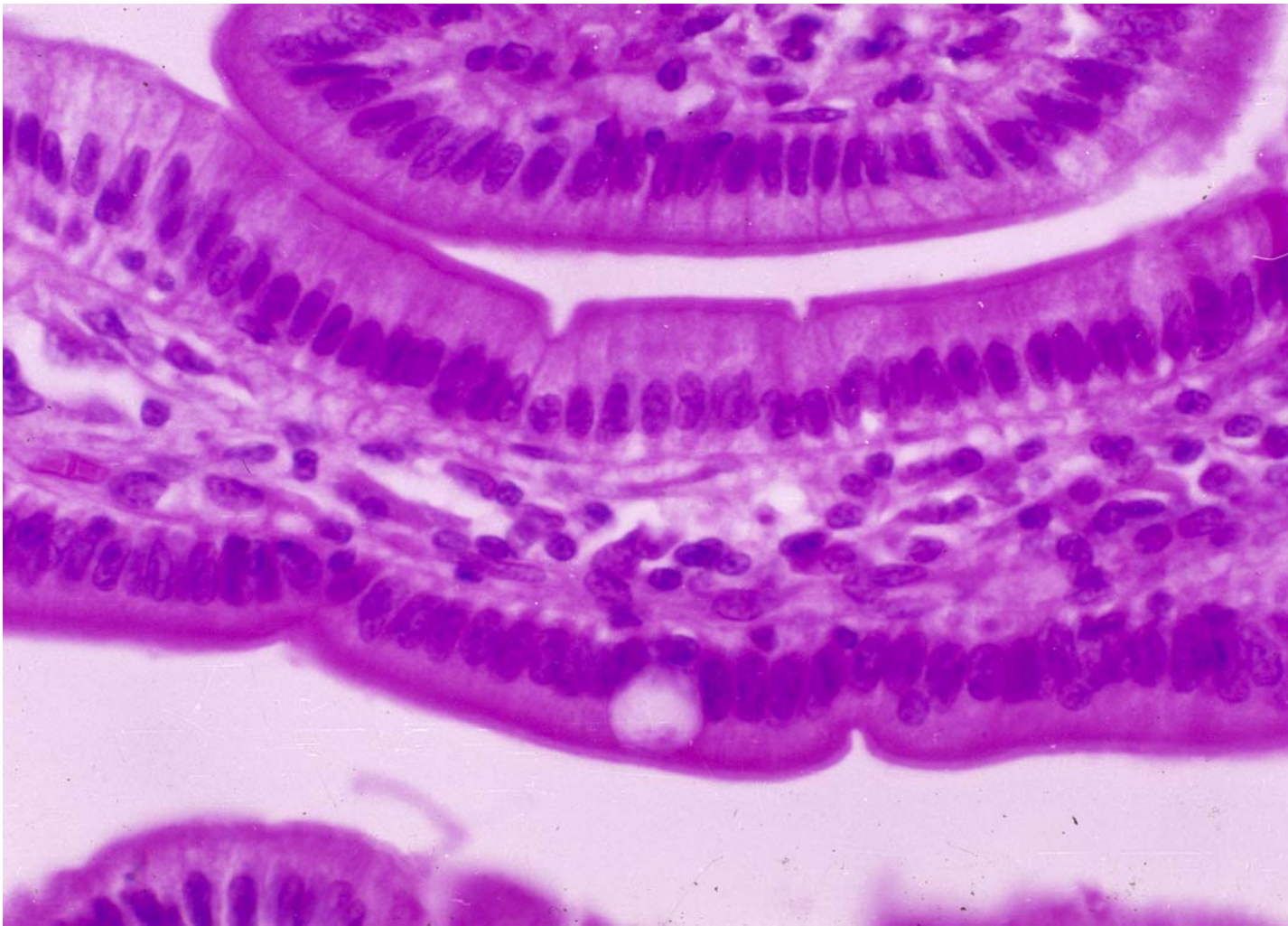
No.85 Transitional epithelium

No.66 Glandular epithelium

## III EM photos: 6—10

## IV Drawing: Simple columnar epithelium





**Simple columnar epithelium**

**Material :**

**Staining :**

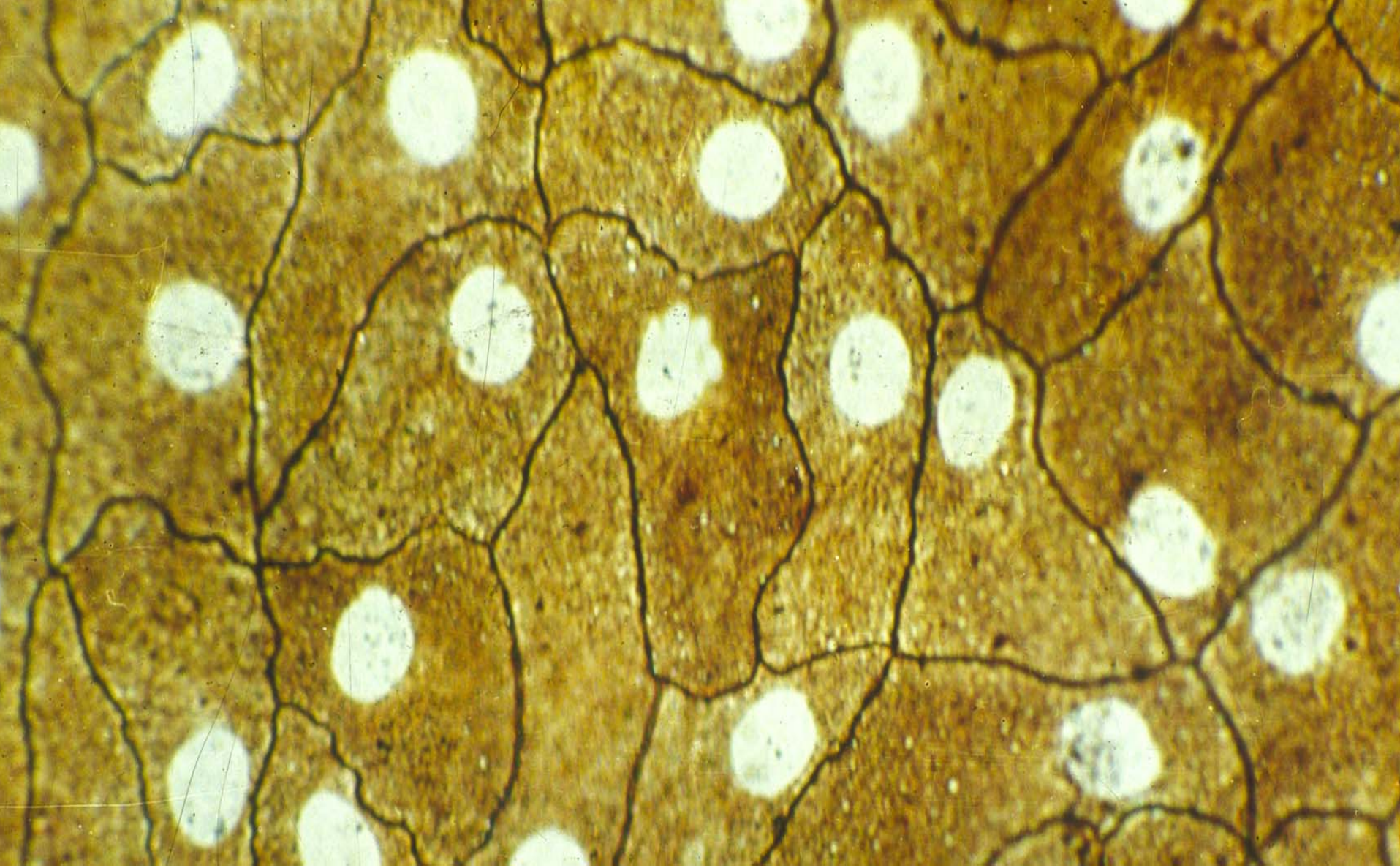
**Amplification:**

**Date:**

# Summary

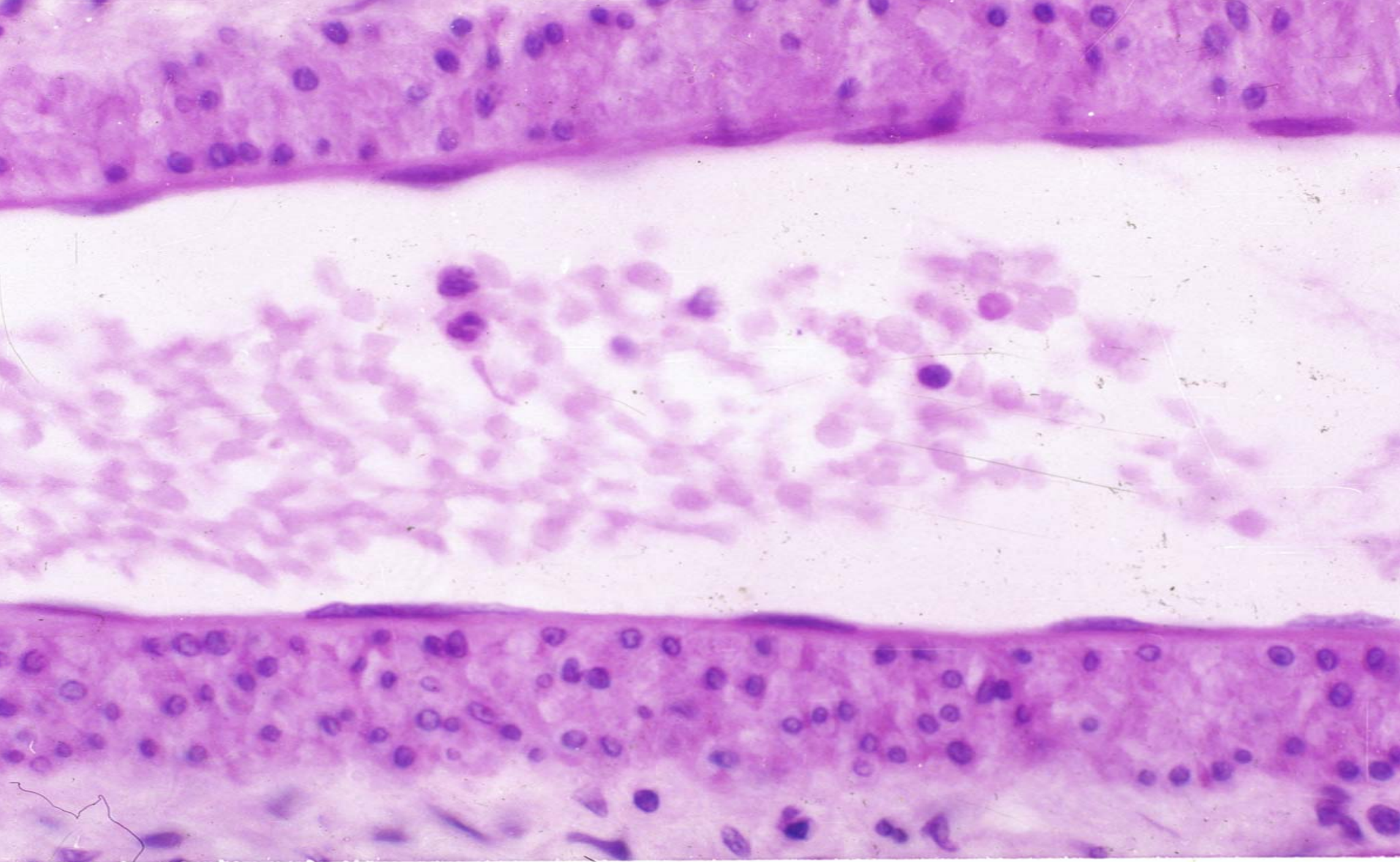
- **the types, microstructure and location of covering epithelium**
- **the types and the location of specialization of the epithelial cell**



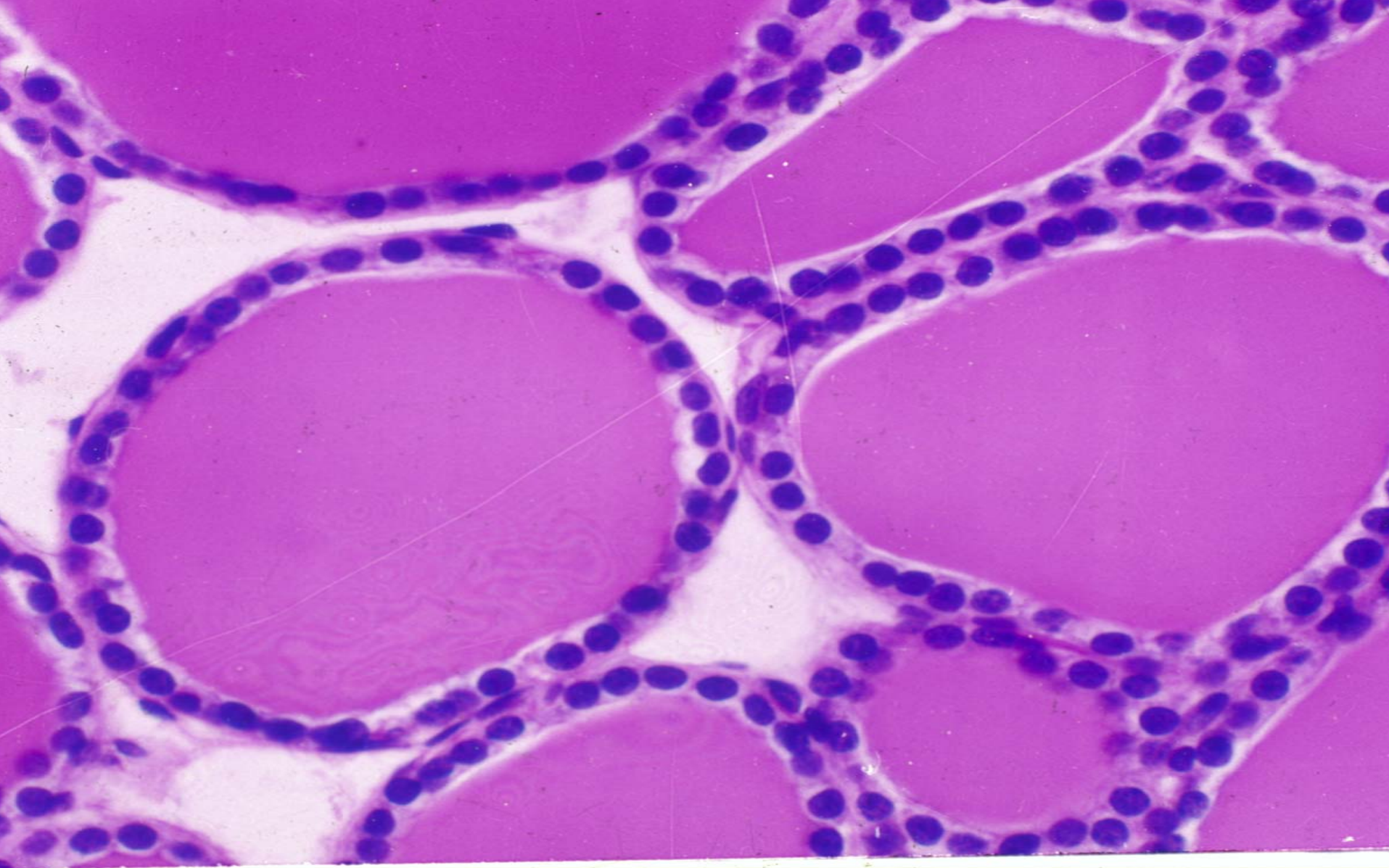


**Simple squamous epithelium**



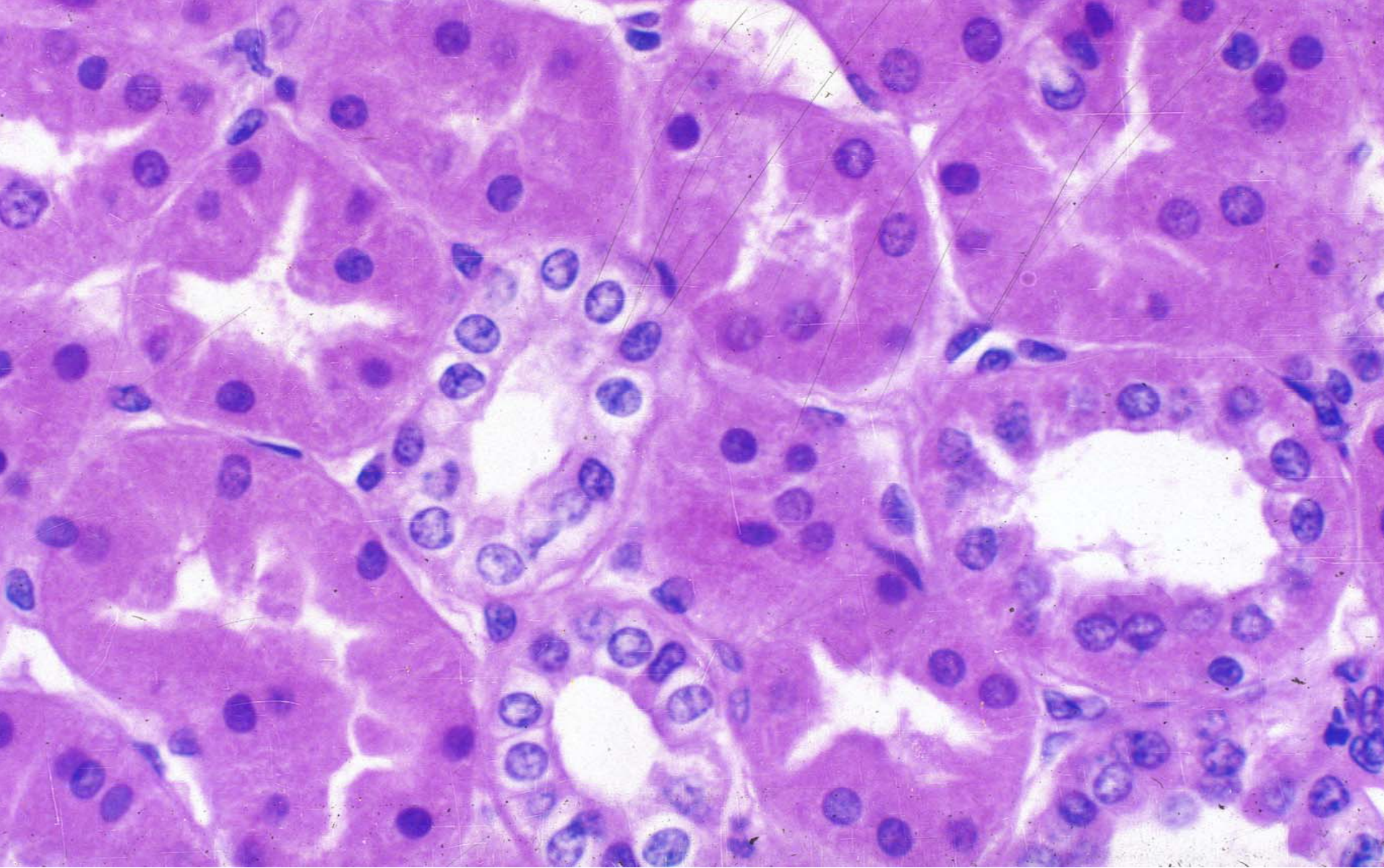


**Simple squamous epithelium**



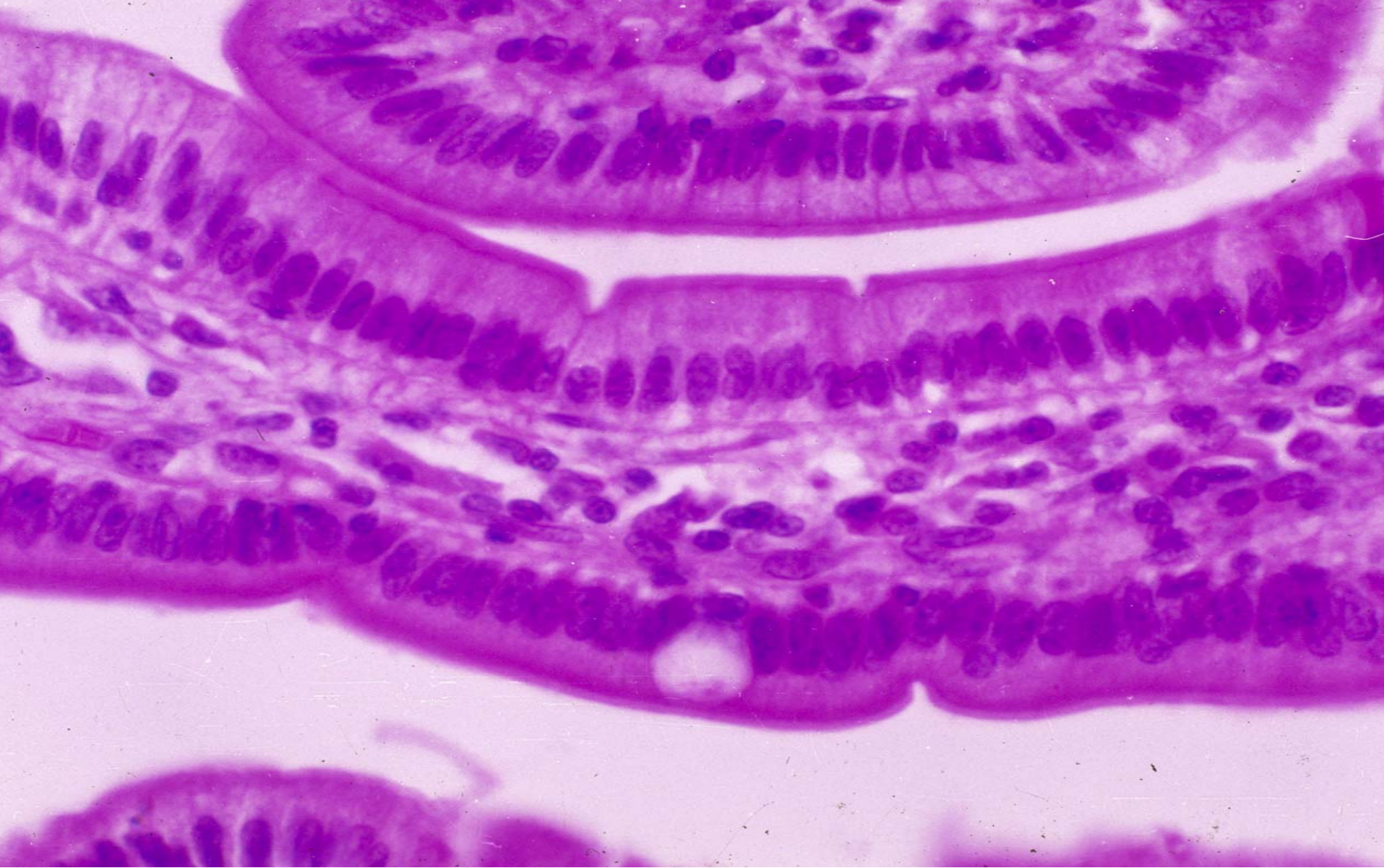
**Simple cuboidal epithelium**





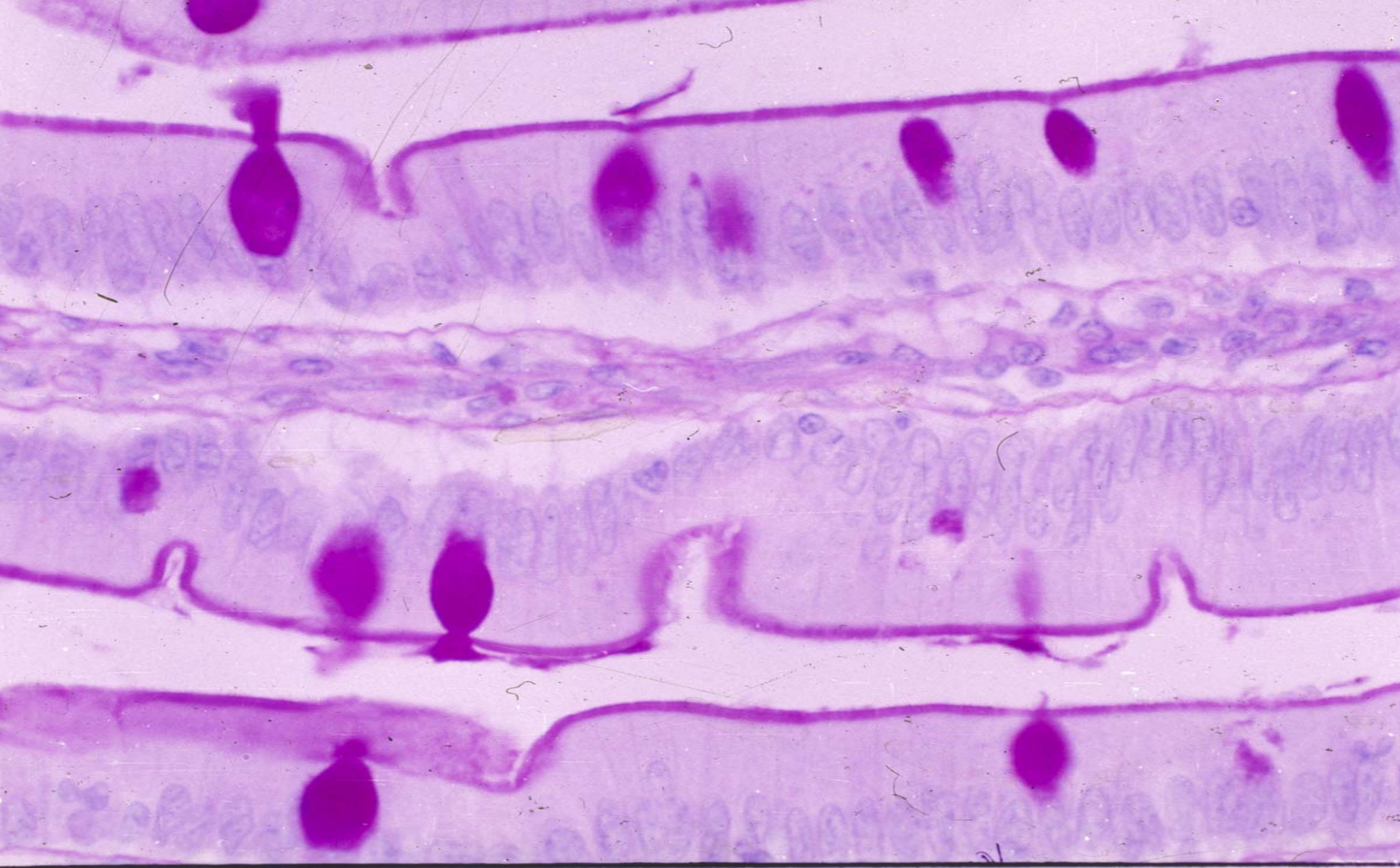
**Simple cuboidal epithelium**





**Simple columnar epithelium**





**Simple columnar epithelium**





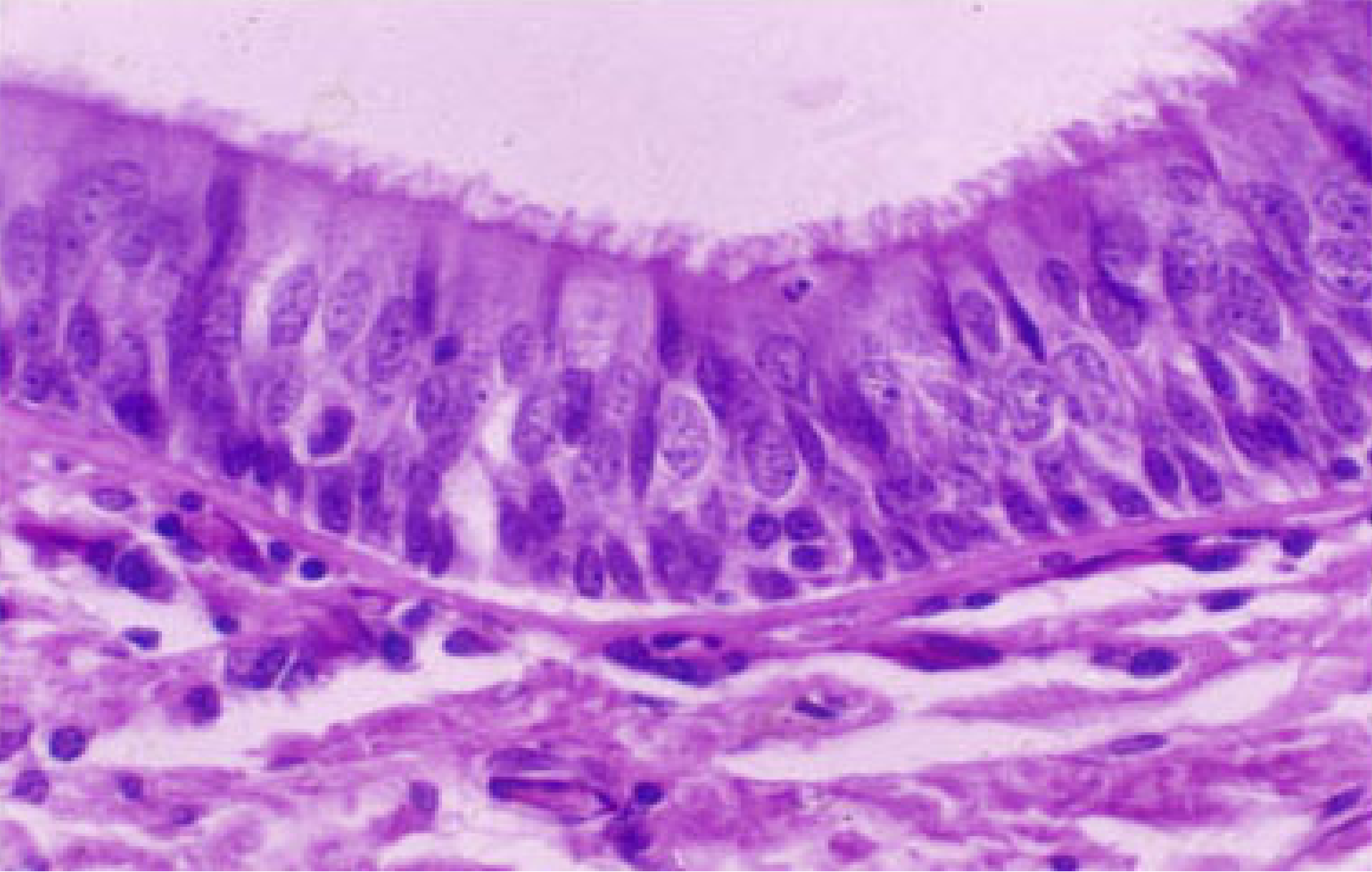
C

M

T

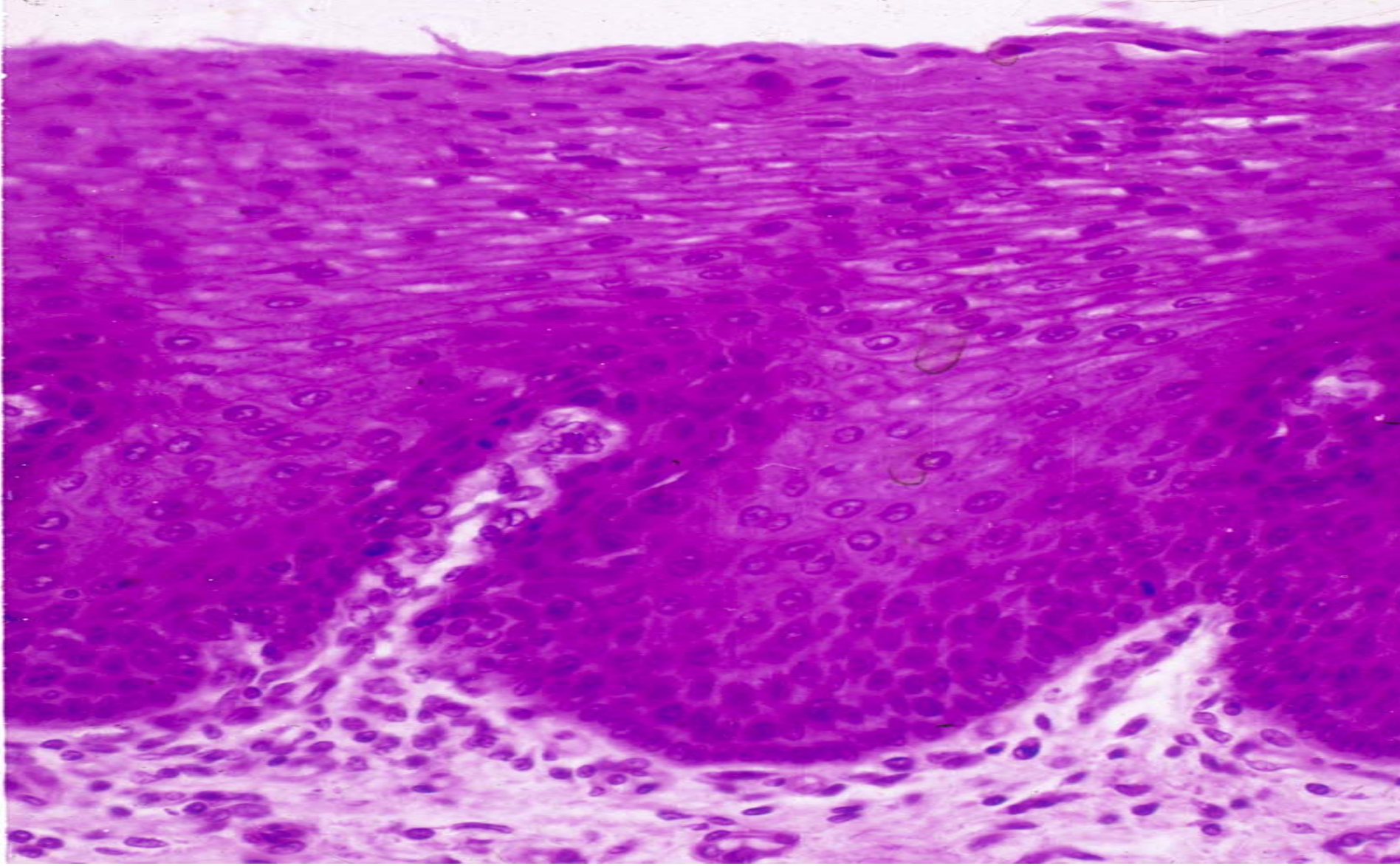
L

Trachea



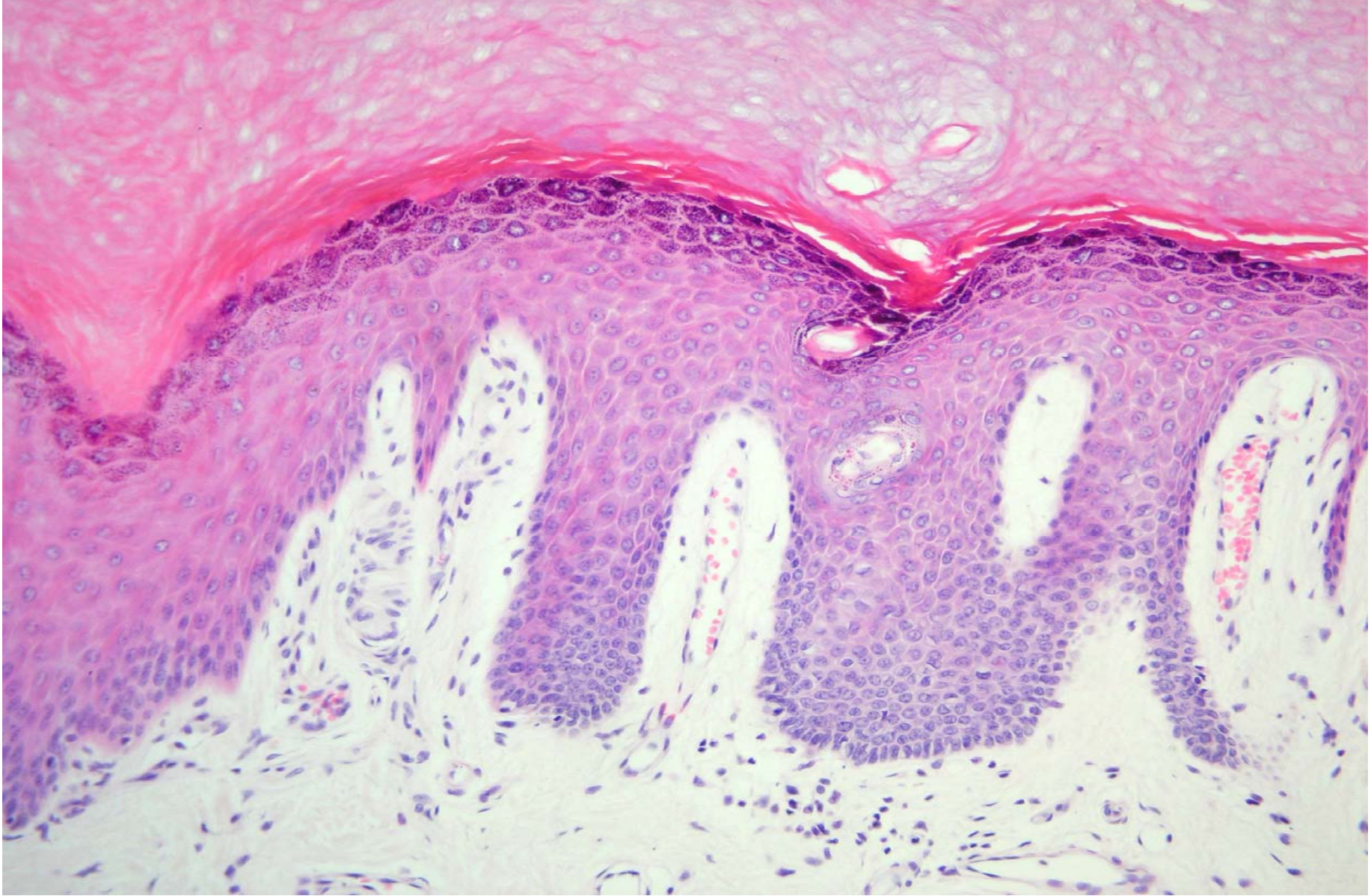
**Pseudostratified ciliated columnar epithelium**





**Stratified squamous nonkeratinized epithelium**





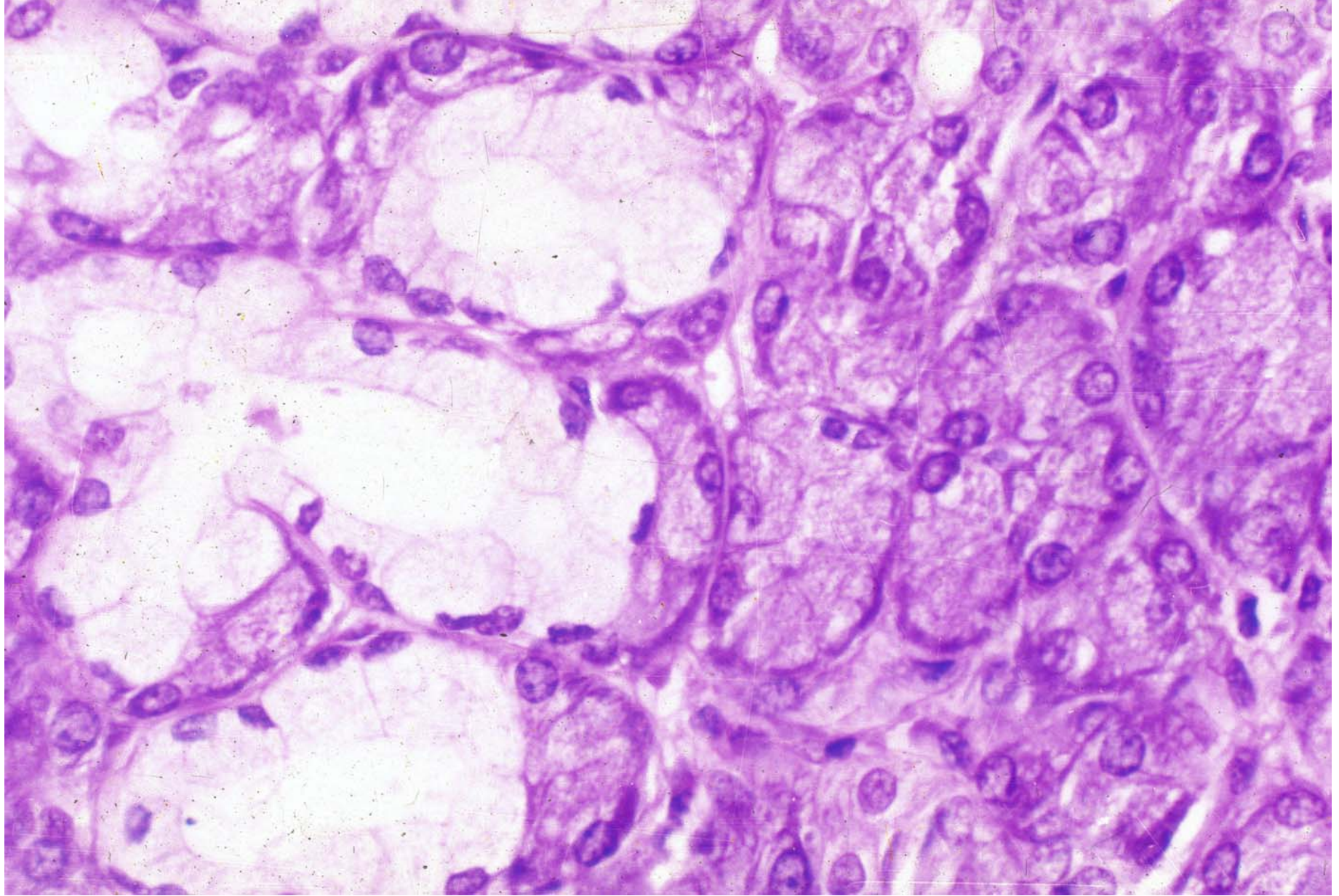
**Stratified squamous keratinized epithelium**





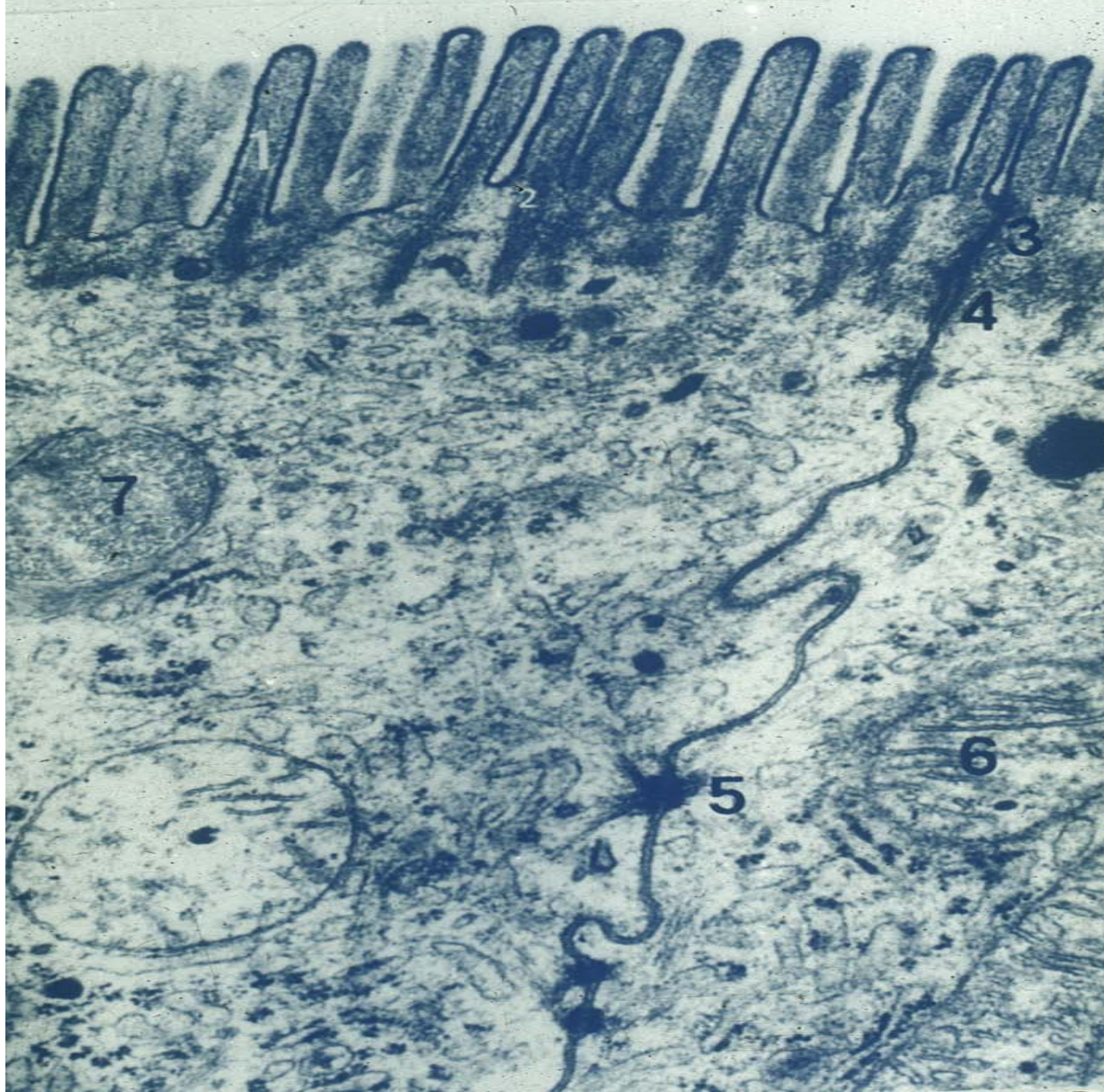
**Transitional epithelium**





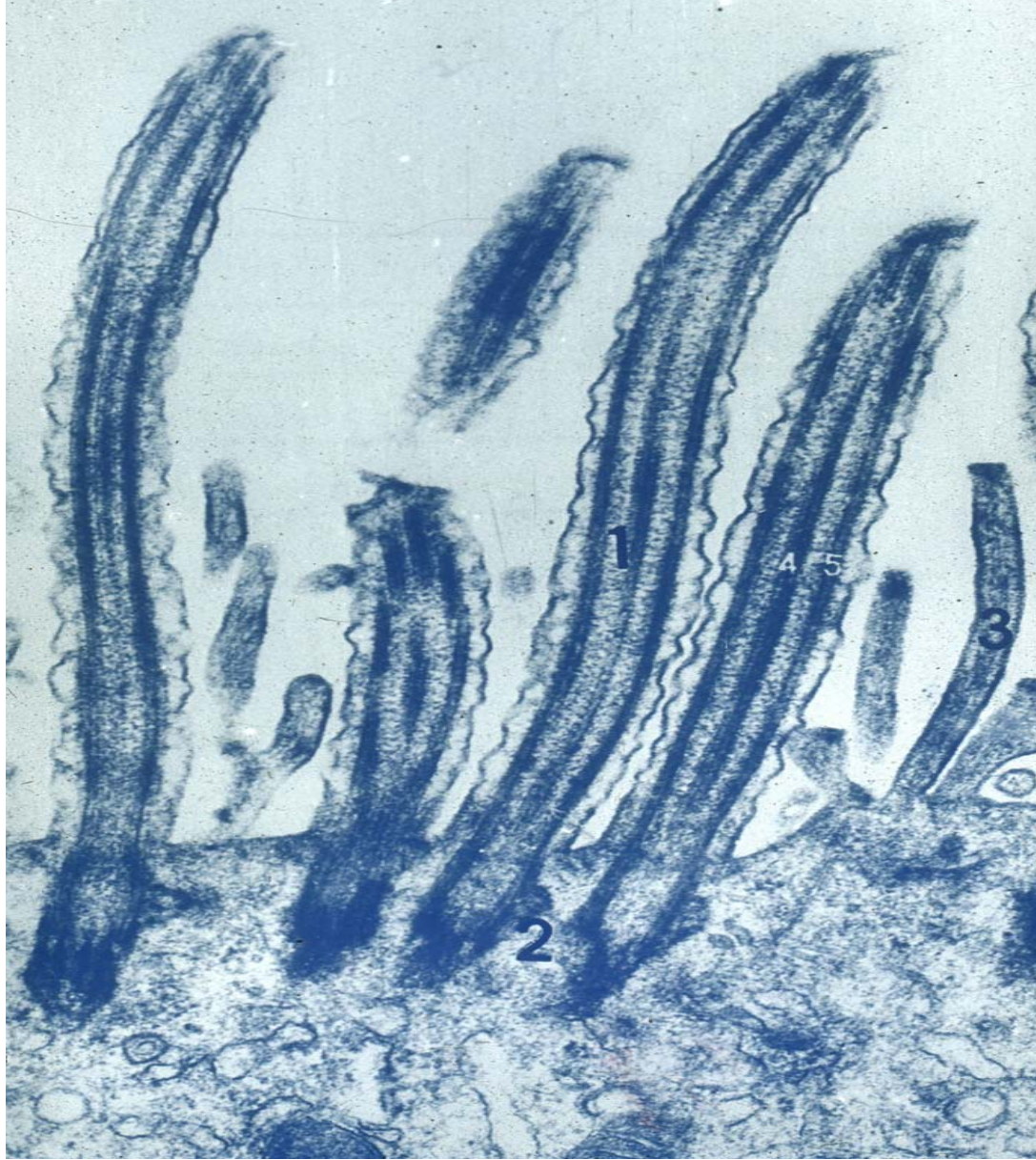
**Glandular epithelium**





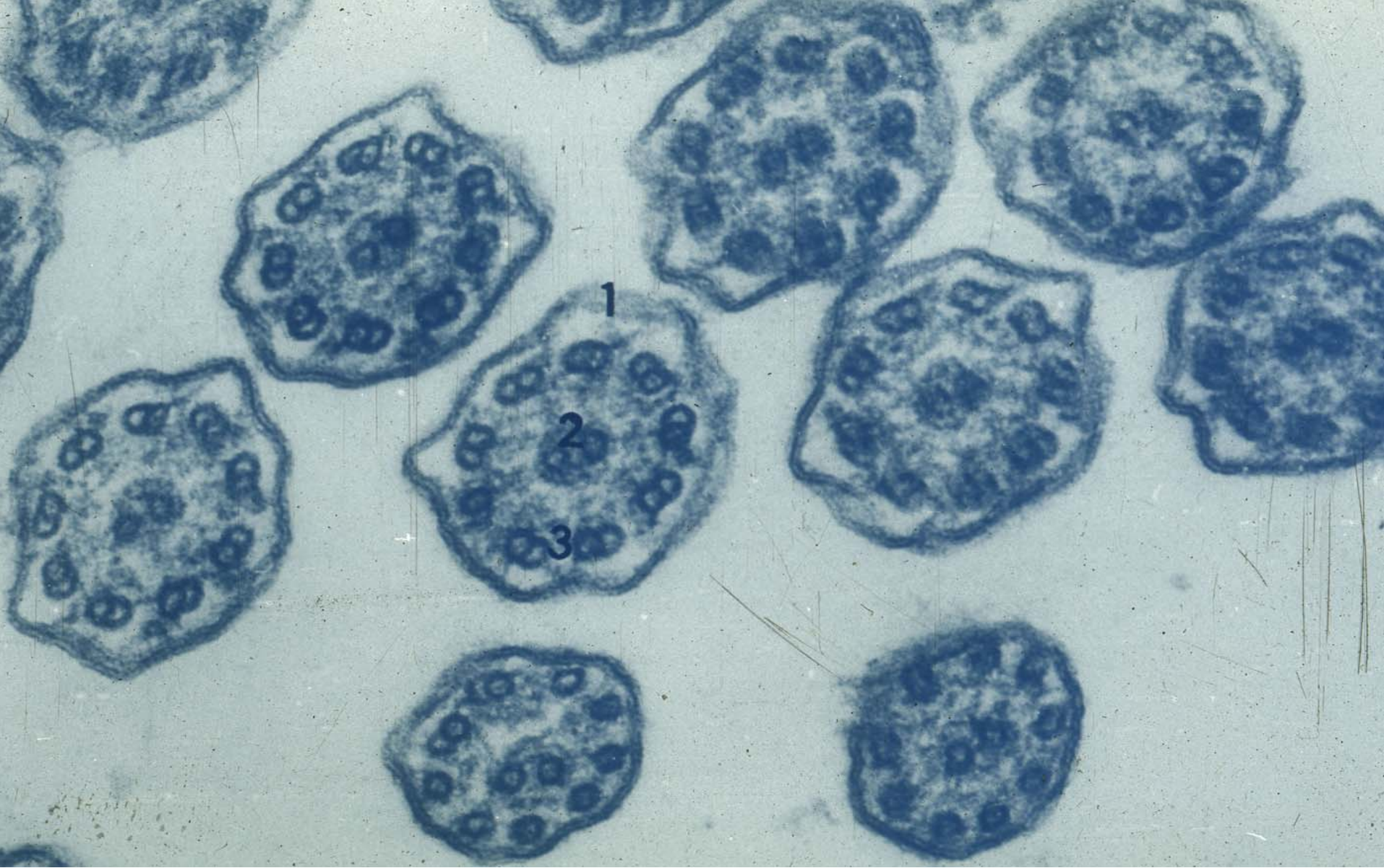
**Tight junction, intermediate junction,  
desmosome and microvillus**





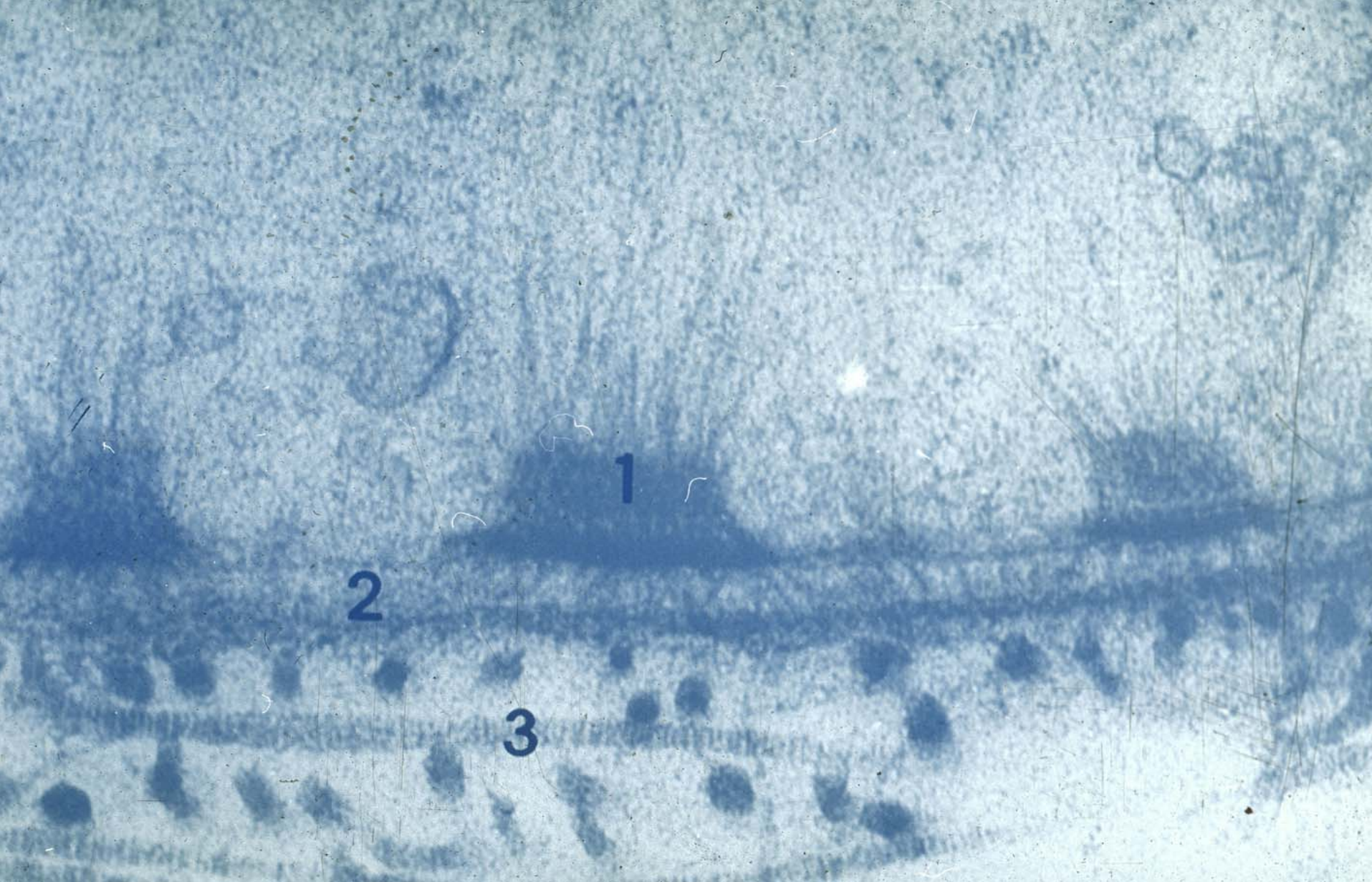
**Cilium**





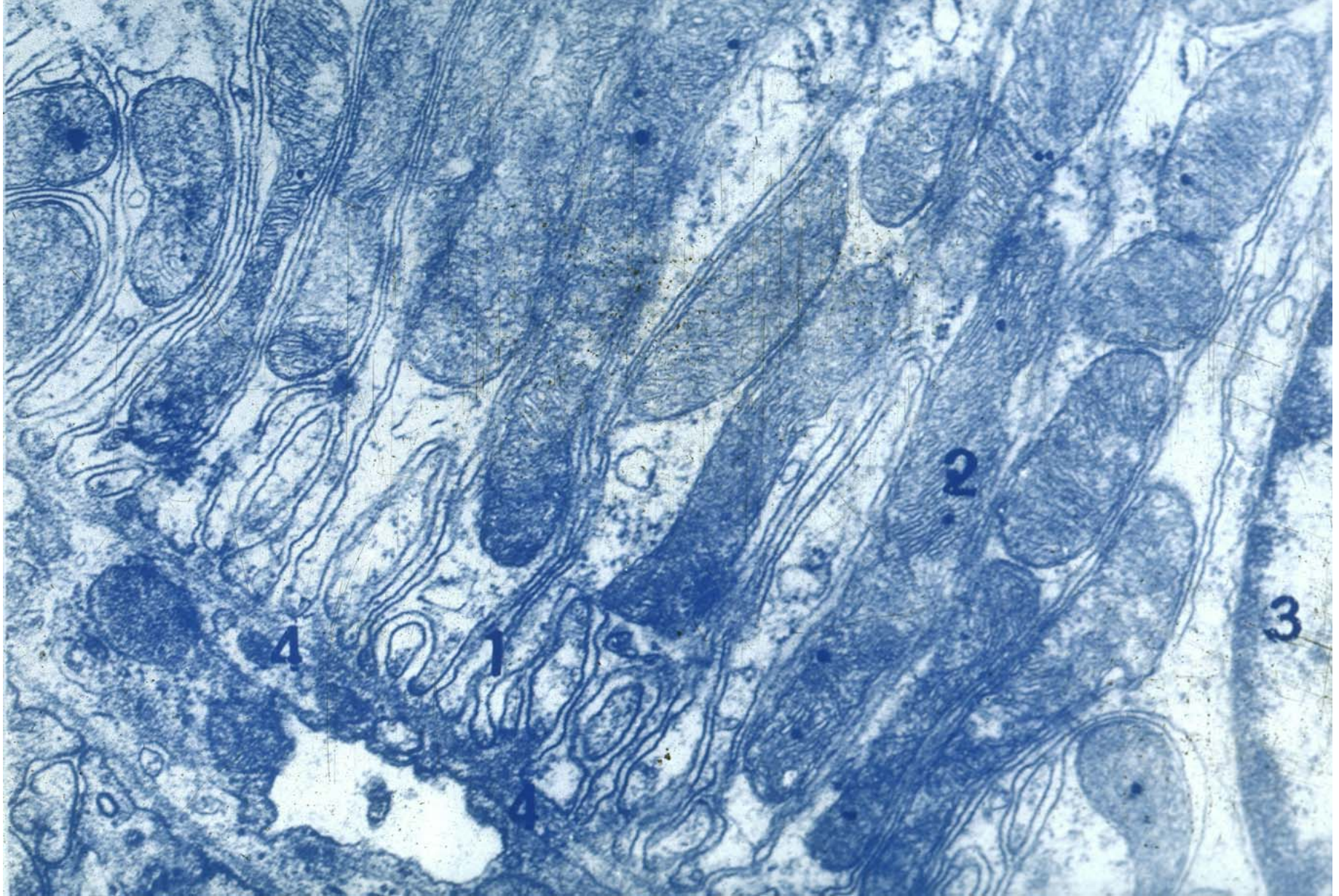
**Cilium**





**Basement membrane and hemidesmosome**





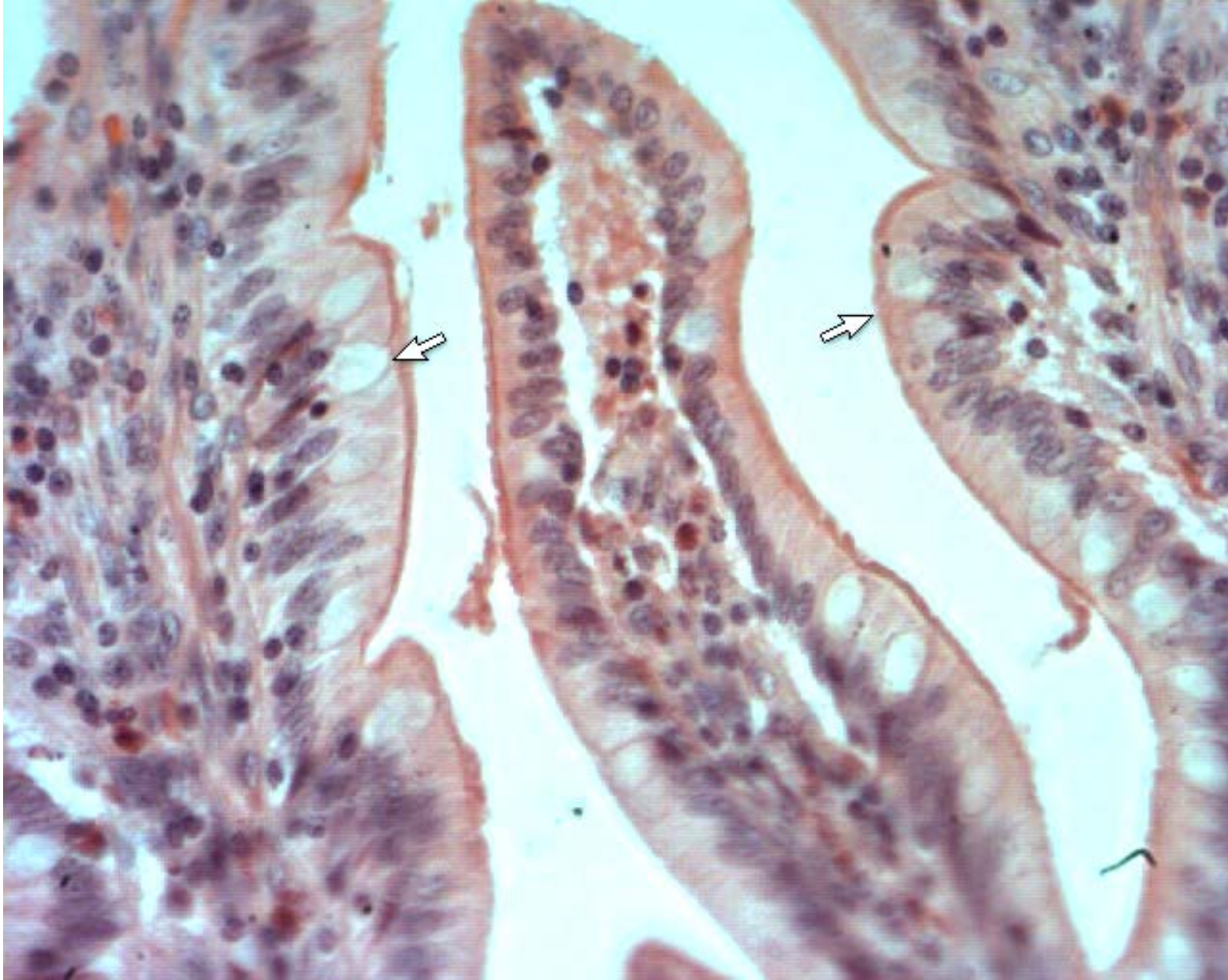
**Plasma membrane infolding**



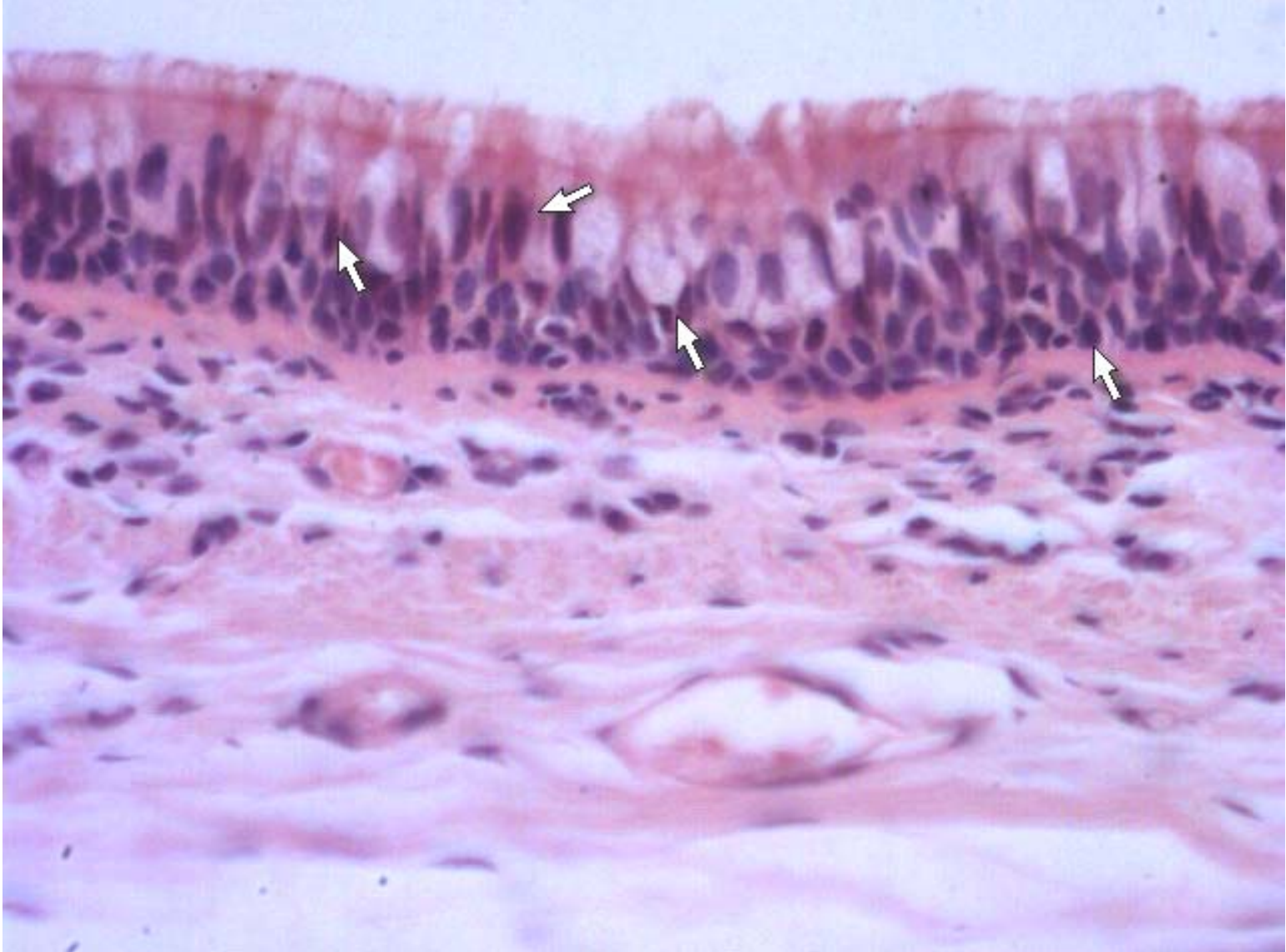


**Simple cuboidal epithelium**





**Simple columnar epithelium**

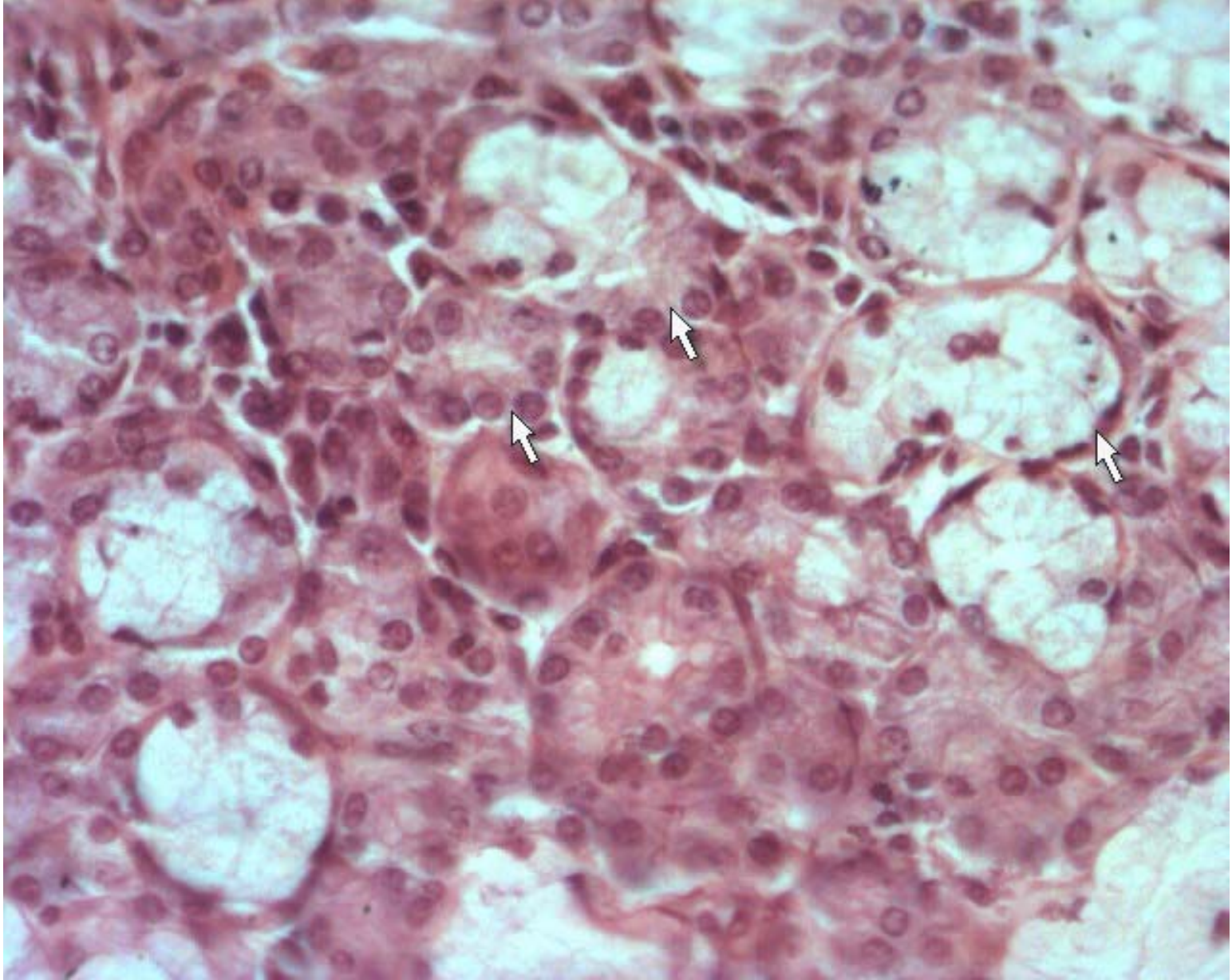


**Pseudostratified ciliated columnar epithelium**





**Stratified squamous nonkeratinized epithelium**



**Glandular epithelium**